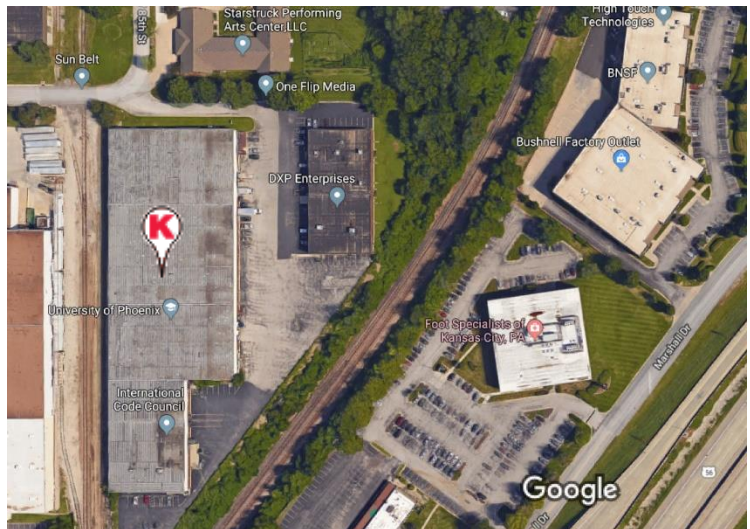


11701-09 W. 85th Street Lenexa, KS



48,000 SF Office/Warehouse Building FOR LEASE

- 900 SF or BTS Office Area
- 7 Dock-High Loading Doors
- 20' Ceiling Height
- New LED Lights
- Quick I-35 Access
- Google Fiber Available
- New Storefront Glass



JACK ALLEN, SIOR ja@karbank.com

JOHN DELZER jd@karbank.com

THE BARNEY BUILDING
2000 SHAWNEE MISSION PARKWAY
SUITE 400
MISSION WOODS, KANSAS 66205

INDUSTRIAL | OFFICE | COMMERCIAL
BROKERAGE & DEVELOPMENT
ESTABLISHED 1950

816.221.4488 MAIN
816.221.4494 FAX
KARBANK.COM

11701-09 W. 85 Street Lenexa, KS

County:	Johnson	Zip:	66214
Building Area:	48,000 SF	Land Area:	4 Acres
Building Dimensions:		Land Dimensions:	Irregular
Office Area:	900 or BTS	Zoning:	BP2
Type Construction:	Masonry & Metal	Condition:	Good
Year Built:	1966	Floors:	One
Ceiling Height:	20'	Floor Type:	5" Reinforced Concrete
Column Spacing:	40' x 40'	Roof Type:	Tar & Gravel
Parking:	10 - 14 Spaces	Plans Available:	Yes
Truck Docks:	7	Drive-In Doors:	None
Dock Door Sizes:	8' x 10'	Drive-In Door Sizes:	N/A
Dock Levelers:	4 Edge-of-Dock	Rail Service:	BN Possible
Sprinkler Type:	Dry	Car Spots:	0
Lighting Type:	LED	Heat Type:	Gas
Electric Service:		Restrooms:	2
Lease Price (SF/YR):	\$3.95	Sale Price:	N/A
Lease Price (MO):	\$15,800.00	Sale Terms:	N/A
Lease Type:	Industrial Gross	Exist. Financing:	N/A
Lease Term:	Negotiable	R.E. Taxes:	N/A
Date Available:	Immediately	Insurance:	N/A

Comments:

- Excellent warehouse space with good access to I-35.
- Google Fiber Available

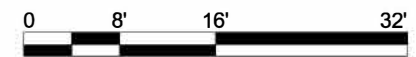
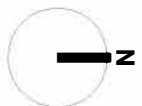
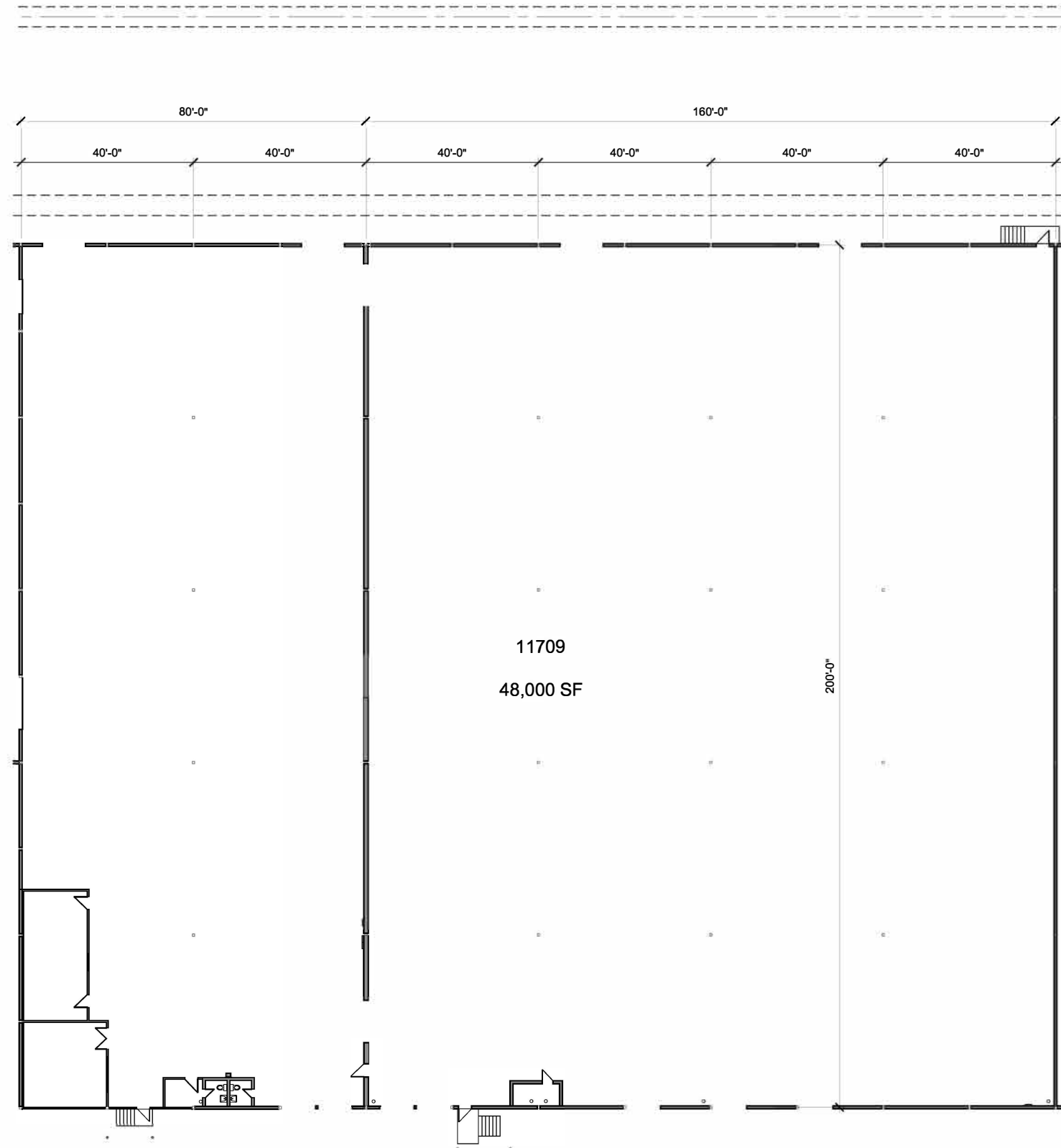
JACK ALLEN, SIOR ja@karbank.com

JOHN DELZER jd@karbank.com

THE BARNEY BUILDING
2000 SHAWNEE MISSION PARKWAY
SUITE 400
MISSION WOODS, KANSAS 66205

INDUSTRIAL | OFFICE | COMMERCIAL
BROKERAGE & DEVELOPMENT
ESTABLISHED 1950

816.221.4488 MAIN
816.221.4494 FAX
KARBANK.COM



2000 SHAWNEE MISSION PARKWAY
 STE 100 MISSION WOODS, KS 66205
 TEL 816 502 1500 FAX 816 842 1878

PROJECT
11709 W. 85TH STREET
 LENEXA, KANSAS

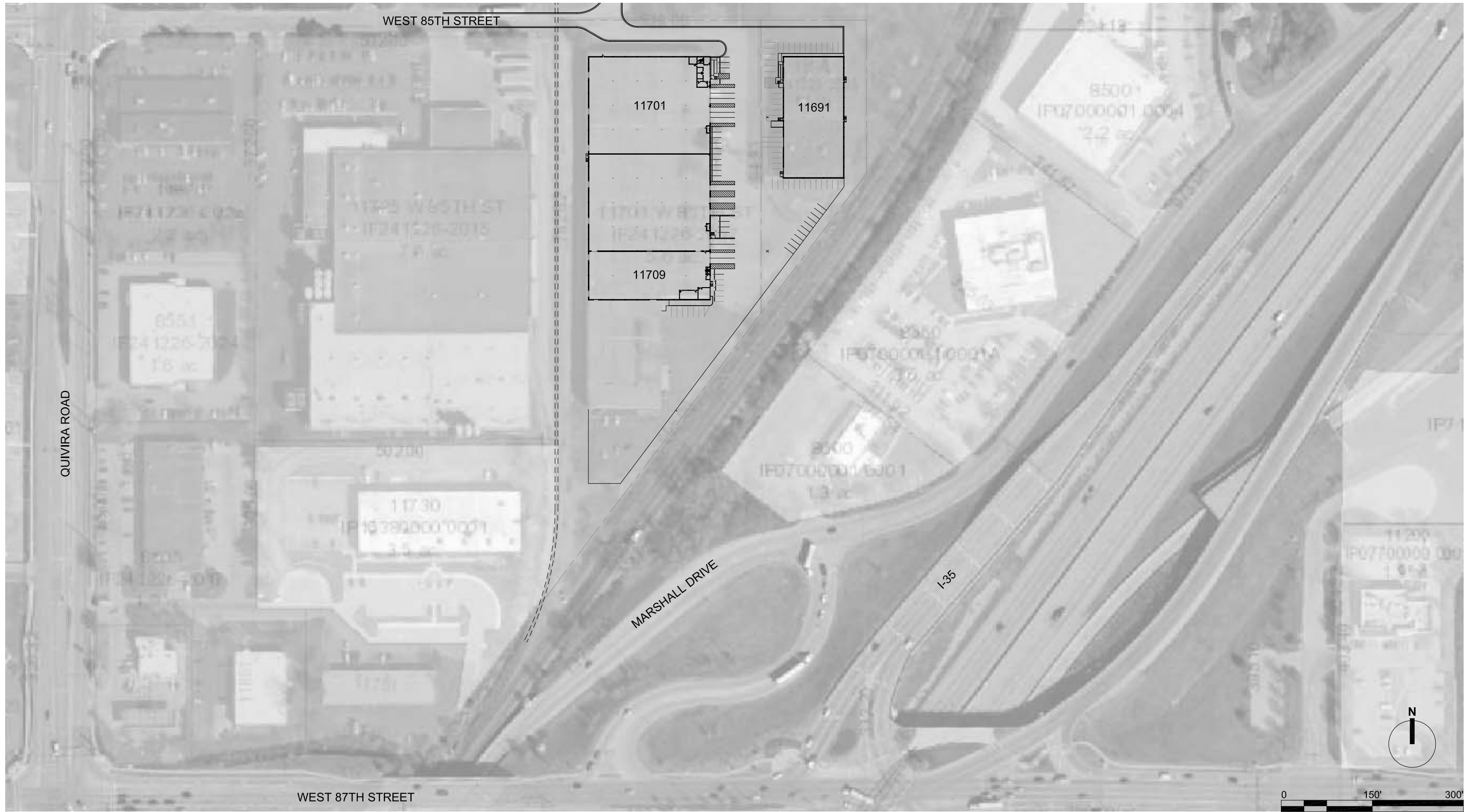
SCALE 1/16" = 1'-0"
FLOOR PLAN

PROJECT NUMBER
 2018100.800
 SHEET AUTHOR
 A. HERNDON
 DATE
 AUGUST 16, 2018

SHEET NUMBER
A06

© 2018 Reese Masillon Turley Architecture, LLC
 All rights reserved. No part of this document may be
 reproduced or utilized in any form without the prior written
 authorization of Reese Masillon Turley Architecture, LLC.

RMTA.BIZ



2000 SHAWNEE MISSION PARKWAY
 STE 100 MISSION WOODS, KS 66205
 TEL 816 502 1500 FAX 816 942 1878

PROJECT

11701-09-11 W. 85TH STREET

LENEXA, KANSAS

SCALE 1" = 150'-0"
SITE PLAN

PROJECT NUMBER
 2018100.800

SHEET AUTHOR
 A. HERNDON

DATE
 AUGUST 16, 2018

© 2018 Rees Masarikis Turkey Architecture, LLC
 All rights reserved. No part of this document may be
 reproduced or used in any form without the prior written
 authorization of Rees Masarikis Turkey Architecture, LLC.

SHEET NUMBER

A01

RMTA.BIZ