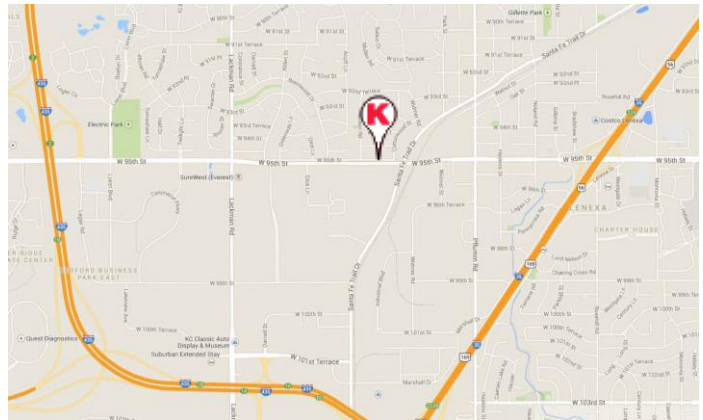


## 14113-17 W. 95<sup>th</sup> Street Lenexa, KS



## 6,784 SF Office/Flex FOR LEASE

- Flexible Plan
- Signage on 95<sup>th</sup> Street
- Abundant Parking
- Quick Access to I-35 & I-435
- Lease Rate - \$9.50 PSF Gross
- Google Fiber



JOHN DELZER jd@karbank.com

PAUL FOGEL, SIOR, CPM, CCIM pf@karbank.com

JACK ALLEN, SIOR ja@karbank.com

THE BARNEY BUILDING  
2000 SHAWNEE MISSION PARKWAY  
SUITE 400  
MISSION WOODS, KANSAS 66205

INDUSTRIAL | OFFICE | COMMERCIAL  
BROKERAGE & DEVELOPMENT  
ESTABLISHED 1950

816.221.4488 MAIN  
816.221.4494 FAX  
[KARBANK.COM](http://KARBANK.COM)



REAL ESTATE COMPANY

## 14113-17 W. 95<sup>th</sup> Street Lenexa, KS

<b>County:</b>	Johnson	<b>Zip:</b>	66215
<b>Building Area:</b>	6,784 SF	<b>Land Area:</b>	
<b>Building Dimensions:</b>	Varies	<b>Land Dimensions:</b>	
<b>Office Area:</b>	6,784 SF	<b>Zoning:</b>	BP
<b>Type Construction:</b>	Brick & Block	<b>Condition:</b>	Excellent
<b>Year Built:</b>	1987	<b>Floors:</b>	One
<b>Ceiling Height:</b>	15'	<b>Floor Type:</b>	5" Reinforced Concrete
<b>Column Spacing:</b>	25' x 41'	<b>Roof Type:</b>	Single-Ply Membrane
<b>Parking:</b>	3.5 : 1,000 SF	<b>Plans Available:</b>	Yes
<b>Truck Docks:</b>	None	<b>Drive-In Doors:</b>	Two
<b>Dock Door Sizes:</b>	N/A	<b>Drive-In Door Sizes:</b>	10' x 10'
<b>Dock Levelers:</b>	None	<b>Rail Service:</b>	No
<b>Sprinkler Type:</b>	N/A	<b>Car Spots:</b>	N/A
<b>Lighting Type:</b>	Fluorescent	<b>Heat Type:</b>	Gas
<b>Electric Service:</b>	400 Amp, 3 Phase	<b>Restrooms:</b>	Four
<b>Lease Price (SF/YR):</b>	\$9.50	<b>Sale Price:</b>	N/A
<b>Lease Price (MO):</b>	\$5,370.00	<b>Sale Terms:</b>	N/A
<b>Lease Type:</b>	Gross Industrial	<b>Exist. Financing:</b>	N/A
<b>Lease Term:</b>	Negotiable	<b>R.E. Taxes:</b>	
<b>Date Available:</b>	Immediately	<b>Insurance:</b>	

### Comments:

- Excellent visibility and signage.
- Great for office/showroom with flexible floor plan.
- Google Fiber Available.

JACK ALLEN, SIOR ja@karbank.com

THE BARNEY BUILDING  
2000 SHAWNEE MISSION PARKWAY  
SUITE 400  
MISSION WOODS, KANSAS 66205

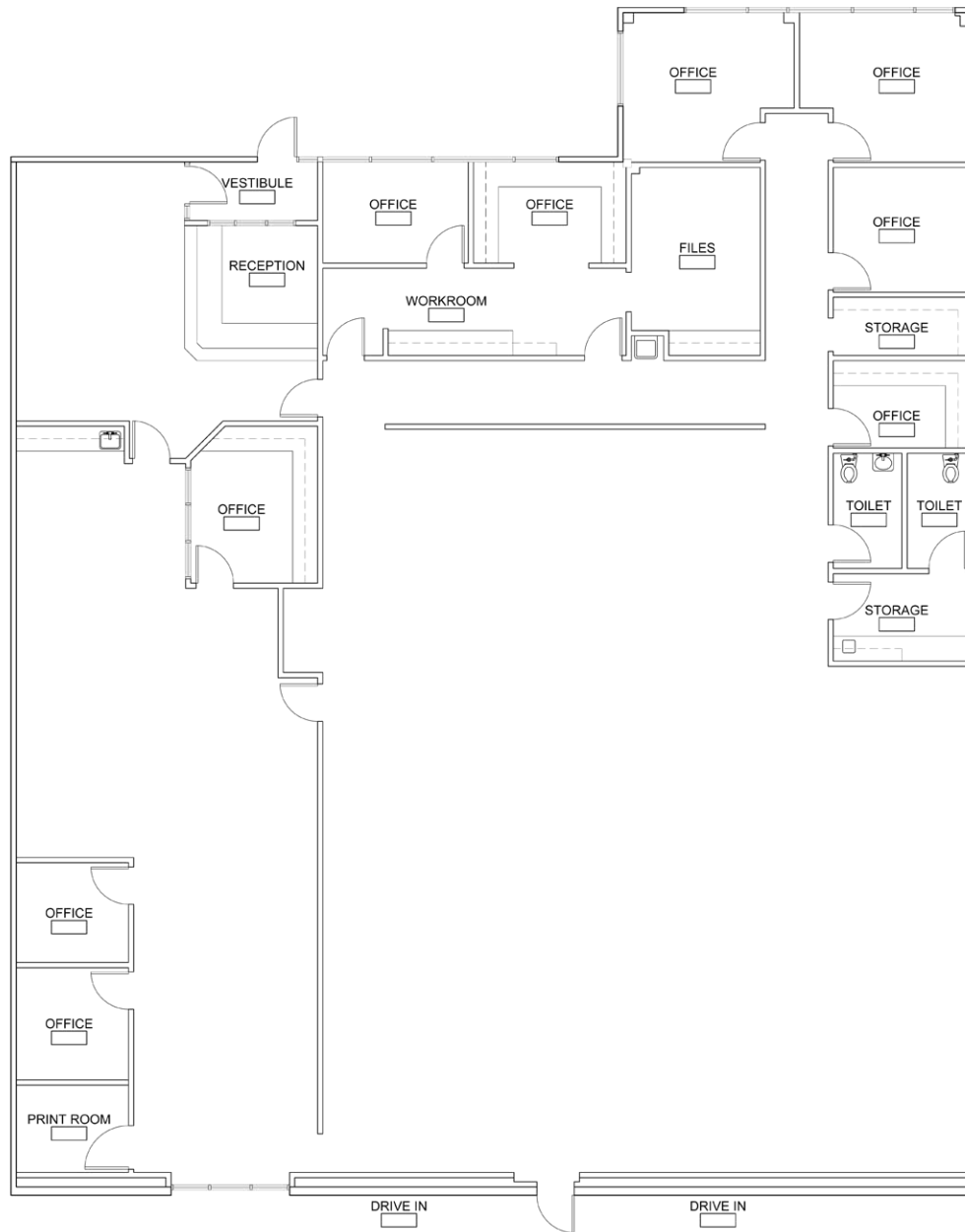
PAUL FOGEL, SIOR, CPM, CCIM pf@karbank.com

INDUSTRIAL | OFFICE | COMMERCIAL  
BROKERAGE & DEVELOPMENT  
ESTABLISHED 1950

JOHN DELZER jd@karbank.com

816.221.4488 MAIN  
816.221.4494 FAX  
[KARBANK.COM](http://KARBANK.COM)

**CORFAC**  
International



**KARBANK**

REAL ESTATE COMPANY

THE BARNEY BUILDING  
 2000 SHAWNEE MISSION PARKWAY | SUITE 400  
 MISSION WOODS, KANSAS 66205  
[KARBANK.COM](http://KARBANK.COM)

ADDRESS **14113-17 W. 95th**  
**Lenexa, KS**

PLAN TYPE  
**Floor Plan**

TOTAL SF  
**6,784**

TOTAL OFFICE SF

DATE  
**3-9-2017**

SCALE

