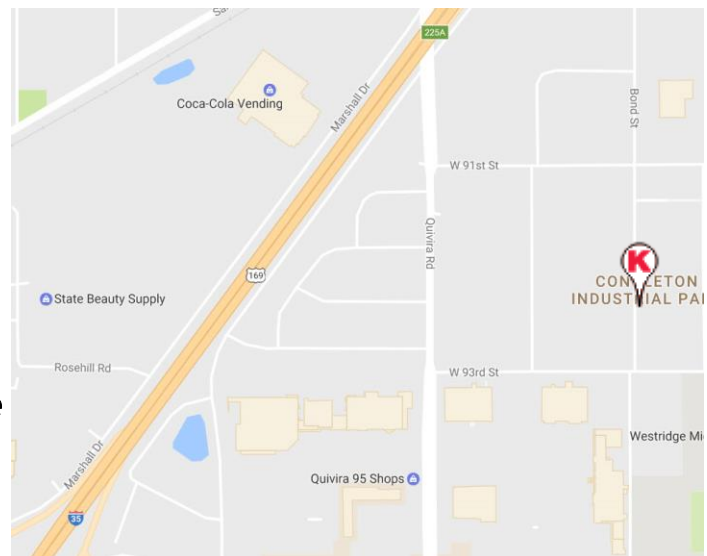


9215 Bond Overland Park, KS



7,200 SF Office/Showroom/Warehouse FOR LEASE

- 2,475 SF office
- 14' clear ceiling height
- 2 dock-high doors
- 100% air-conditioned
- Quick access to I-35 and 69 alternate at either 87th Street or 95th Street exchanges



PAUL FOGEL, SIOR pf@karbank.com

THE BARNEY BUILDING
2000 SHAWNEE MISSION PARKWAY
SUITE 400
MISSION WOODS, KANSAS 66205

INDUSTRIAL | OFFICE | COMMERCIAL
BROKERAGE & DEVELOPMENT
ESTABLISHED 1950

JOHN DELZER jd@karbank.com

816.221.4488 MAIN
816.221.4494 FAX
KARBANK.COM

9215 Bond Overland Park, KS

County:	Johnson	Zip:	66214
Building Area:	7,200 SF	Land Area:	40,280 SF
Building Dimensions:	80' x 90'	Land Dimensions:	190' x 212'
Office Area:	2,475 SF	Zoning:	M-1
Type Construction:	Brick & Block	Condition:	Good
Year Built:	1968	Floors:	One
Ceiling Height:	14'	Floor Type:	Concrete
Column Spacing:	30' x 40'	Roof Type:	Built Up
Parking:	10 Spaces	Plans Available:	Yes
Truck Docks:	Two	Drive-In Doors:	None
Dock Door Sizes:	8' x 9'	Drive-In Door Sizes:	N/A
Dock Levelers:	No	Rail Service:	No
Sprinkler Type:	N/A	Car Spots:	N/A
Lighting Type:	Fluorescent	Heat Type:	Gas
Electric Service:	400 Amp	Restrooms:	Two
Lease Price (SF/YR):	\$5.95	Sale Price:	N/A
Lease Price (MO):	\$3,570	Sale Terms:	N/A
Lease Type:	Industrial Gross	Exist. Financing:	None
Lease Term:	Negotiable	R.E. Taxes:	
Date Available:	January 1, 2019	Insurance:	

Comments:

- Close to all services with easy access to I-35

PAUL FOGEL, SIOR pf@karbank.com

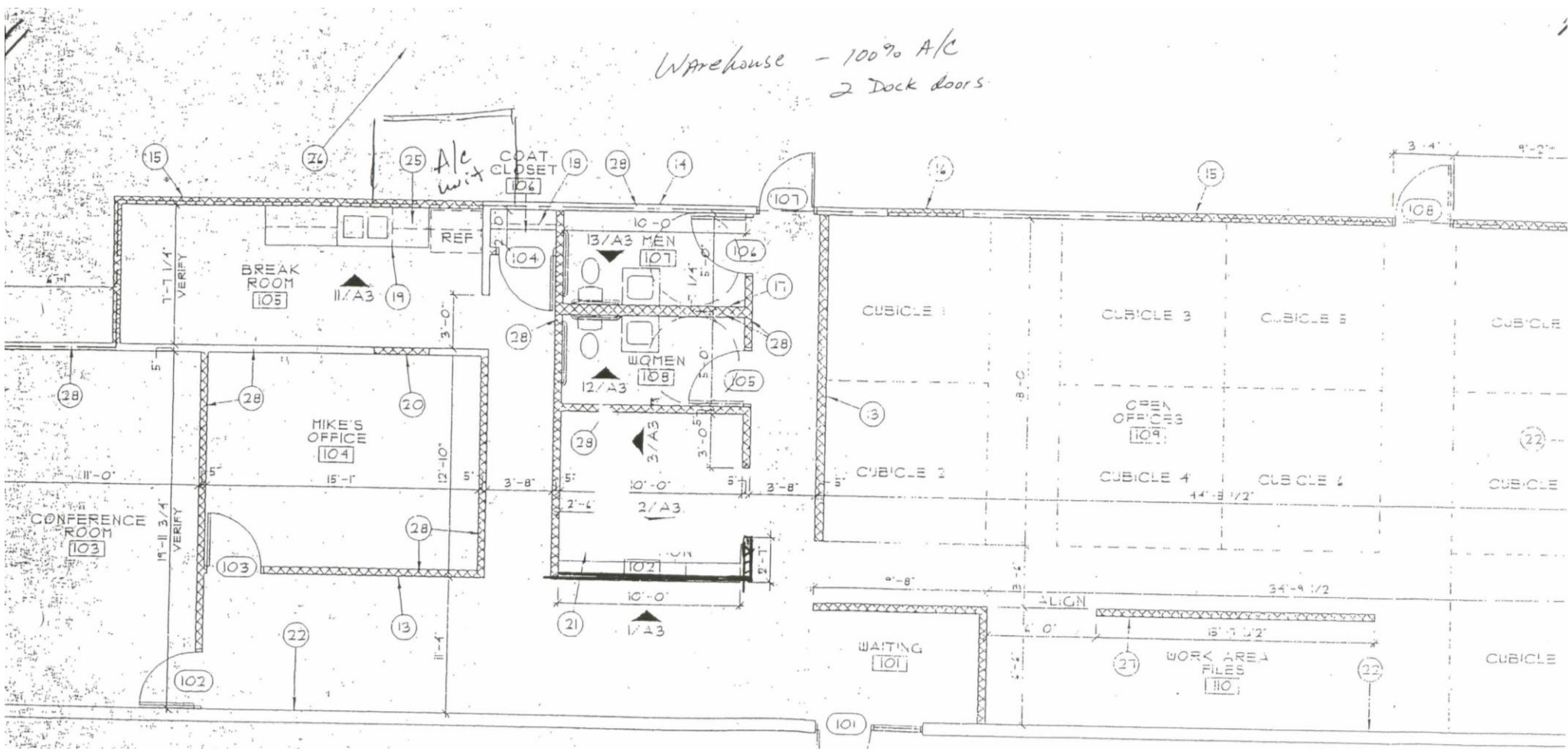
JOHN DELZER jd@karbank.com

THE BARNEY BUILDING
2000 SHAWNEE MISSION PARKWAY
SUITE 400
MISSION WOODS, KANSAS 66205

INDUSTRIAL | OFFICE | COMMERCIAL
BROKERAGE & DEVELOPMENT
ESTABLISHED 1950

816.221.4488 MAIN
816.221.4494 FAX
KARBANK.COM

Warehouse - 100% A/C
2 Dock doors



KARBANK
REAL ESTATE COMPANY

1200 MAIN STREET | SUITE 3910 | 816.221.4488
KANSAS CITY, MO | 64105 | KARBANK.COM

ADDRESS 9215 Bond
Overland Park, KS

PLAN TYPE Floor Plan

TOTAL SF
7,200

TOTAL OFFICE SF
2,475

DATE
7-20-2011

SCALE

