

249,465 SF
FOR LEASE



1500 WARREN STREET NORTH KANSAS CITY, MISSOURI

WAREHOUSE AND MANUFACTURING BUILDING



FOR MORE INFORMATION
PLEASE CONTACT

JACK ALLEN, SIOR
JA@KARBANK.COM

PAUL FOGEL, SIOR
PF@KARBANK.COM

JOHN DELZER
JD@KARBANK.COM

FEATURES

- 25 dock high doors
- 1 drive in door
- 23 dock levelers
- 24' ceiling height
- Wet sprinkler
- 10.41 acres
- M-1 zoning
- BNSF rail available
- Available 7/1/2021

\$3.50 PSF GROSS

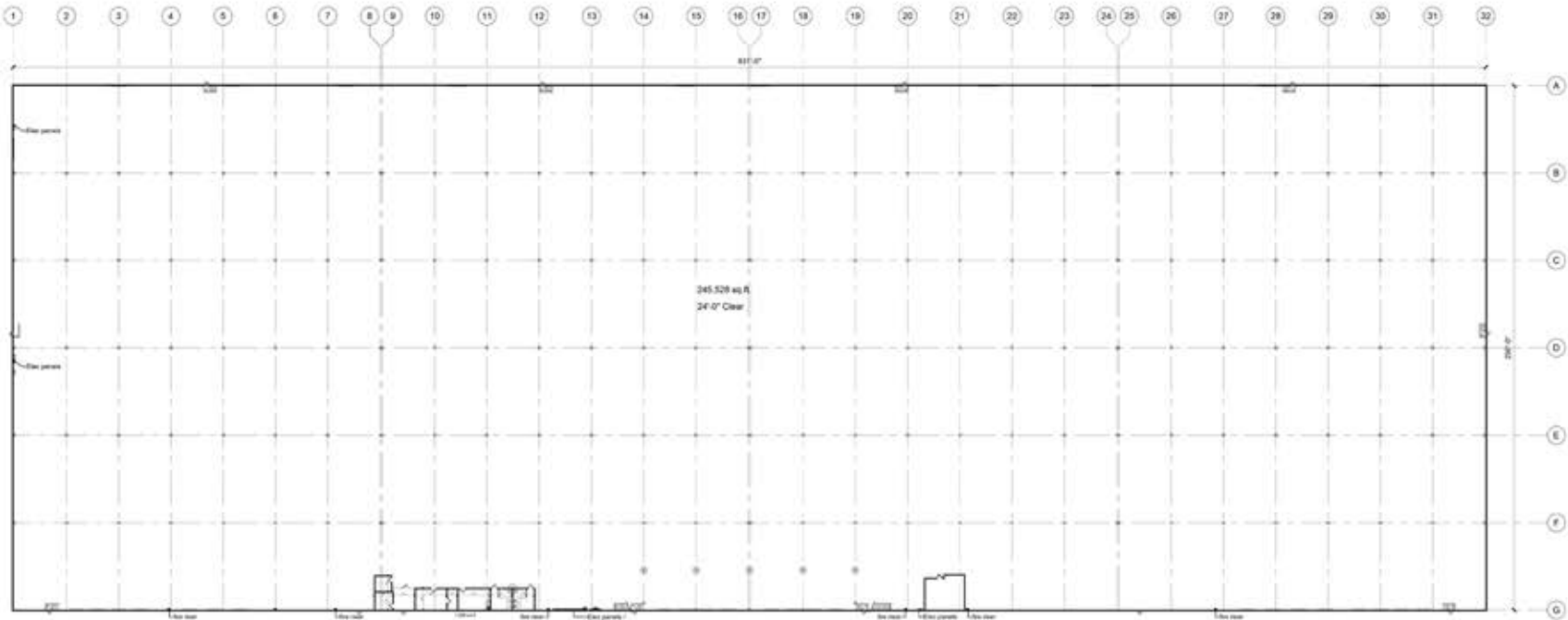
THE BARNEY BUILDING
2000 SHAWNEE MISSION PARKWAY
SUITE 400
MISSION WOODS, KS 66205

816.221.4498
816.221.4494

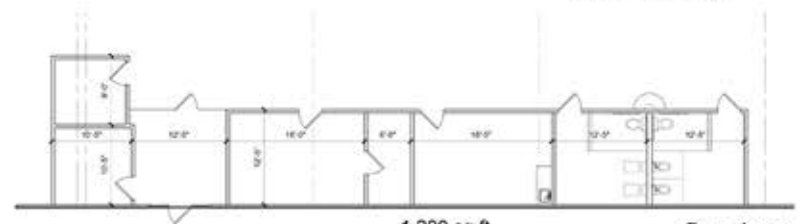
KARBANK.COM

Information furnished regarding property is from sources deemed reliable but no warranty or representation is made as to the accuracy thereof and same is submitted subject to errors, omissions, prior sale or lease or withdrawal without notice.

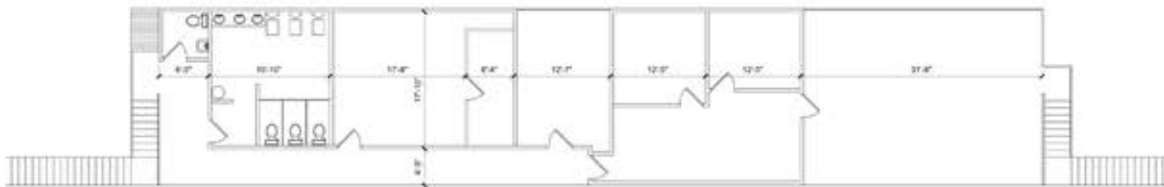




1 Floor Plan
 scale: 1/32" = 1'-0"
 north



2 Office Plan
 scale: 1/8" = 1'-0"
 north



2 Mezzanine Plan
 scale: 1/8" = 1'-0"
 north

Area Breakdown
 Warehouse: 245,528 sq. ft.
 lower level office: 1,200 sq. ft.
 upper level office: 2,737 sq. ft.
 Total: 249,465 sq. ft.

KARBANK
 REAL ESTATE COMPANY

THE BARNEY BUILDING
 2000 SHAWNEE MISSION PARKWAY | SUITE 400
 MISSION WOODS, KANSAS 66205
 KARBANK.COM

ADDRESS **1500 Warren
 North Kansas City, MO**

PLAN TYPE
Floor Plan

TOTAL SF
249,465 SF

TOTAL OFFICE SF

DATE
9-16-2020

SCALE

