

249,465 SF
FOR LEASE



1500 WARREN STREET NORTH KANSAS CITY, MISSOURI

WAREHOUSE AND MANUFACTURING BUILDING

FEATURES

- 23 docks with levelers
- 1 drive in door
- 24' ceiling height
- Wet sprinkler
- 10.41 acres
- M-1 zoning
- BNSF rail available
- Available 7/1/2021

\$3.50 PSF GROSS

FOR MORE INFORMATION
PLEASE CONTACT

JACK ALLEN
JA@KARBANK.COM

PAUL FOGEL, SIOR
PF@KARBANK.COM

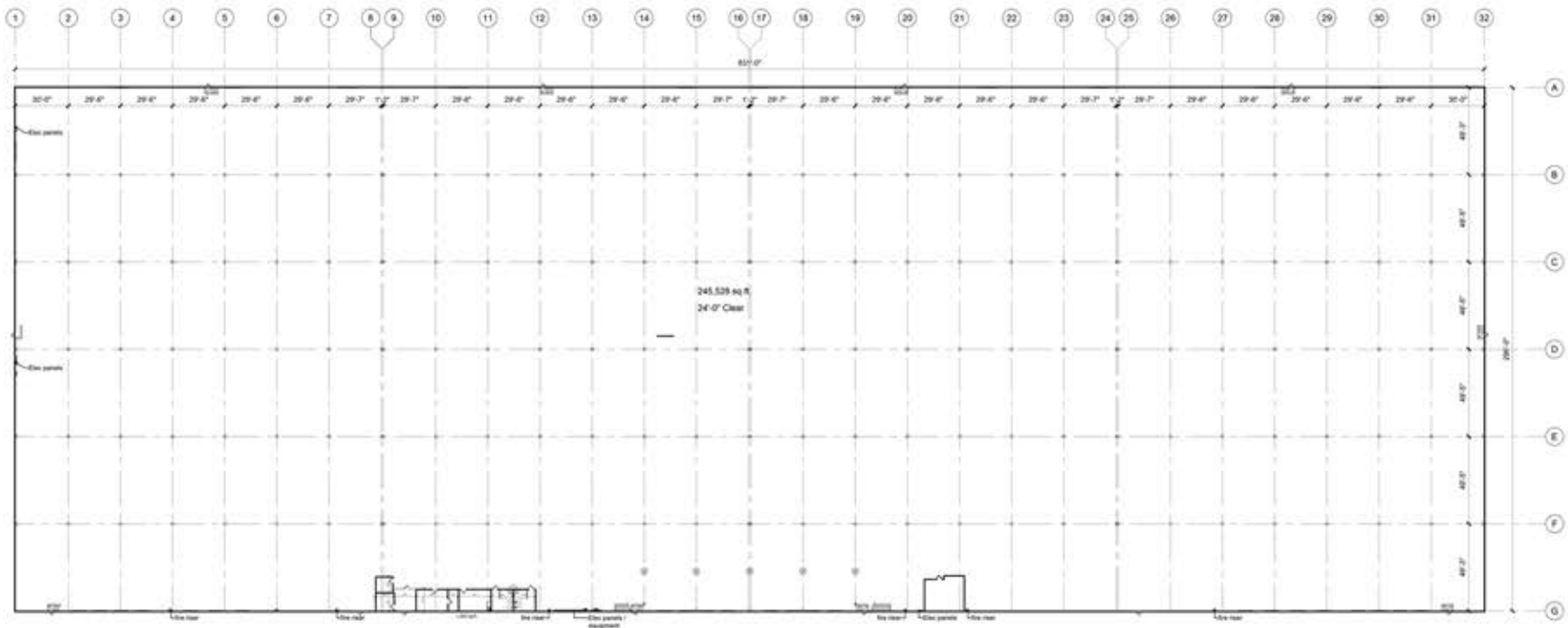
JOHN DELZER
JD@KARBANK.COM



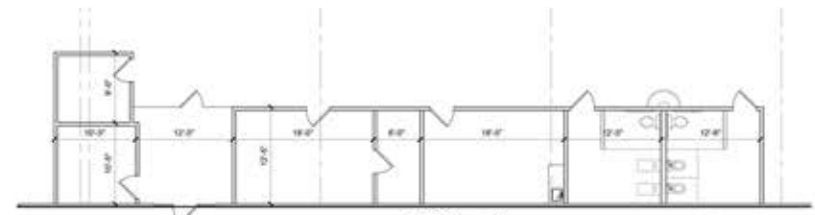
THE BARNEY BUILDING
2000 SHAWNEE MISSION PARKWAY
SUITE 400
MISSION WOODS, KS 66205

816.221.4488
816.221.4494

KARBANK.COM



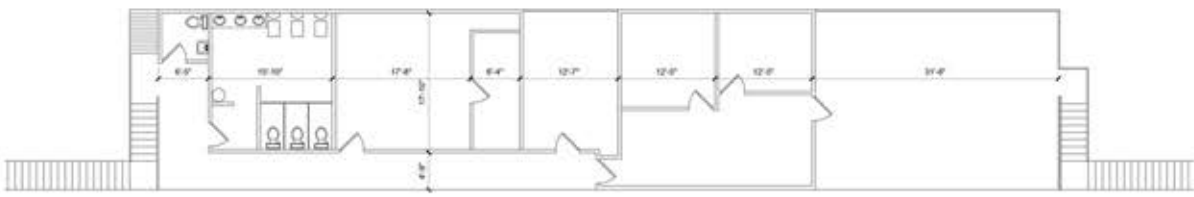
1 Floor Plan
 scale: 1/32" = 1'-0"
 north



1,200 sq.ft.

2 Office Plan
 scale: 1/8" = 1'-0"
 north

fire riser-



Area Breakdown
 Warehouse: 245,528 sq. ft.
 lower level office: 1,200 sq. ft.
 upper level office: 2,737 sq. ft.
 Total: 249,465 sq. ft.

KARBANK
 REAL ESTATE COMPANY

THE BARNEY BUILDING
 2000 SHAWNEE MISSION PARKWAY | SUITE 400
 MISSION WOODS, KANSAS 66205
 KARBANK.COM

ADDRESS **1500 Warren Street
 North Kansas City, MO**

PLAN TYPE
Floor Plan

TOTAL SF
249,465 SF

DATE
10-28-2020

TOTAL OFFICE SF
2,857 SF

SCALE
N/A

