

22,588 SF  
FOR LEASE



## 1501 BEDFORD AVENUE NORTH KANSAS CITY, MISSOURI

WAREHOUSE AND OFFICE BUILDING

### FEATURES

- 2,914 SF office area
- 2 dock high doors
- 18' ceiling height
- Wet fire sprinkler
- LED lighting
- Excellent condition

\$4.10 PSF NN



FOR MORE INFORMATION  
PLEASE CONTACT

PAUL FOGEL, SIOR  
PF@KARBANK.COM

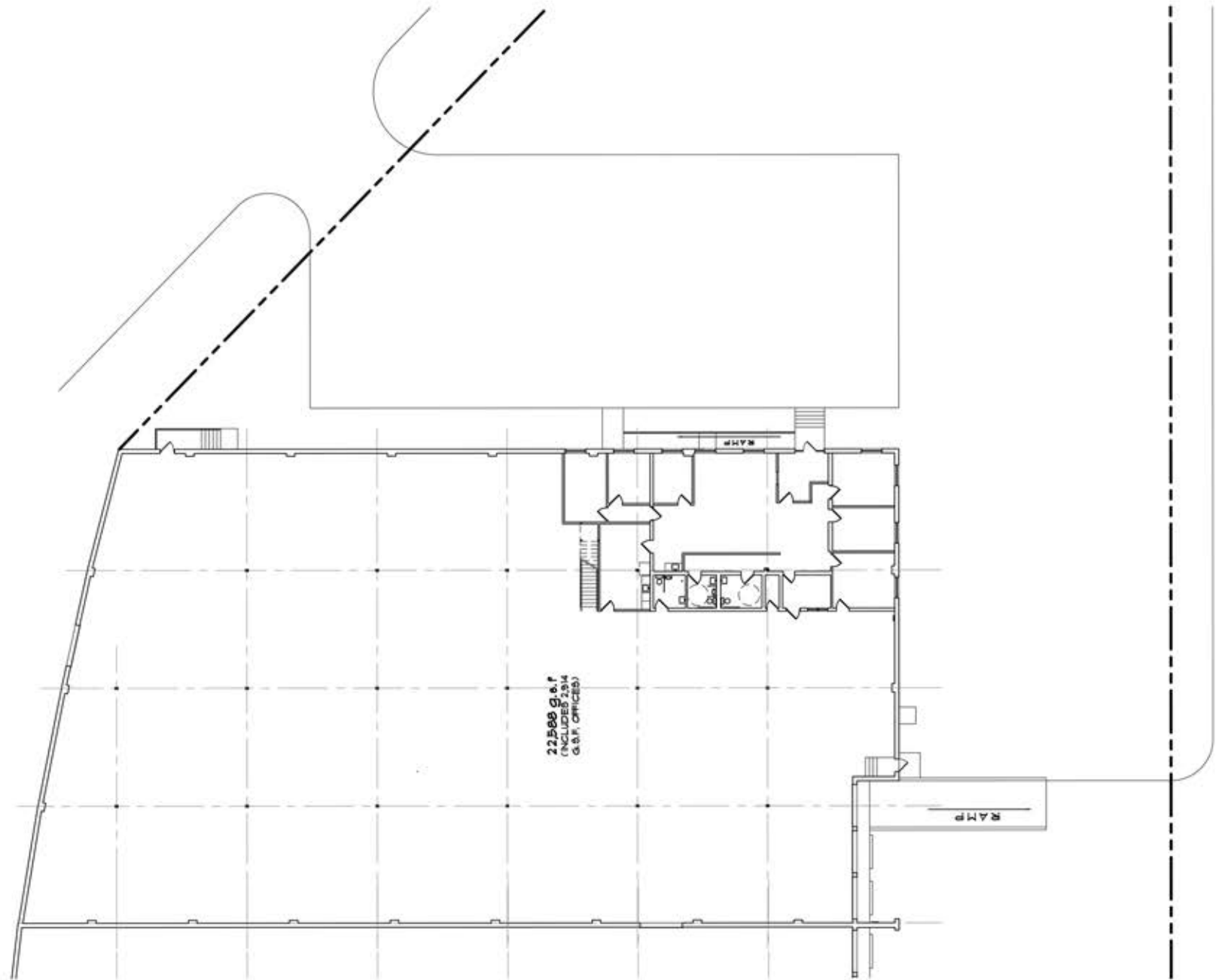
THE BARNEY BUILDING  
2000 SHAWNEE MISSION PARKWAY  
SUITE 400  
MISSION WOODS, KS 66205

816.221.4488  
816.221.4494

KARBANK.COM

Information furnished regarding property is from sources deemed reliable but no warranty or representation is made as to the accuracy thereof and same is submitted subject to errors, omissions, prior sale or lease or withdrawal without notice.





**KARBANK**  
REAL ESTATE COMPANY

THE BARNEY BUILDING  
2000 SHAWNEE MISSION PARKWAY | SUITE 400  
MISSION WOODS, KANSAS 66205  
KARBANK.COM

ADDRESS **1501 Bedford**  
**North Kansas City, MO**

PLAN TYPE  
**Site Plan**

TOTAL SF  
**25,888 SF**

TOTAL OFFICE SF  
**2,914 SF**

DATE  
**6-23-2020**

SCALE  
**N/A**

